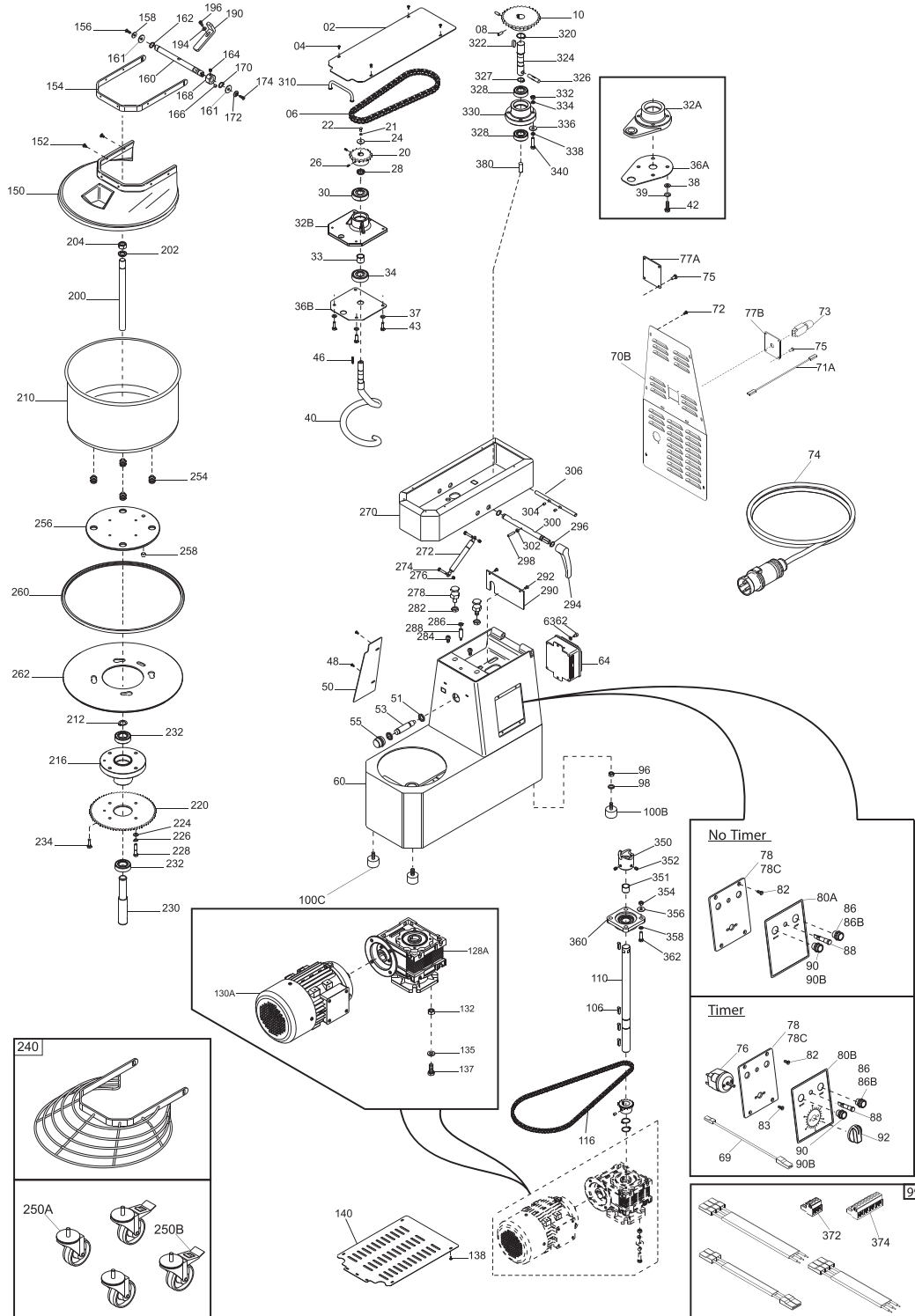


# Parts Breakdown

Model MX-IT-0030-RT 47288



# Parts Breakdown

## Model MX-IT-0030-RT 47288

Item No.	Description	Position	Item No.	Description	Position	Item No.	Description	Position
AH116	Upper Casing ETL VRN for 47288	02	AH115	Welded Frame ETL TA 30 Vern. for 47288	60	AH041	Pinion Z20 3/8x7/32" D25 for 47288	120
69217	Screw Poeliers M4x8 for 47288	04, 48, 72, 83, 138	62660	Washer F Wide DIN 9021 D6x18 for 47288	61	AH044	Reducer NMRV 063 B14 1/30 FA 90 for 47288	128A, 130A
AH038	Chain 1/2x5/6" for 47288	06	AH019	Screw TCEI DIN 912 M6x10 for 47288	62	62664	Screw TE DIN 933 M10x20 T.F. for 47288	137
AH031	Screw DIN 916 M6x20 NE for 47288	08	AH066	Electric Box TGM2SIR MN for 47288	64	AH061	Underdeck Protection for 47288	140
AG959	Pinion Z30 1/2x5/16" for 47288	10	AH117	Rear Carter Y16 ETL TA 30 VRN for 47288	70B	AH065	ETL Thermoformed Protection for 47288	150
AH027	Nut ES. DIN 934 M10 for 47288	12, 97, 132, 354	AG952	Power Cable UL Thermal Protection for 47288	71A	69218	Screw Poeliers M5x8 for 47288	152
62645	Flat Washer DIN 125 D 10 for 47288	15, 135, 338, 358	AH046	Thermal Protection T11-211 11A MN for 47288	73	AH063	Lid Frame for 47288	154
AH016	Washer F.Larga DIN 9021 D10x30 for 47288	16	AH112	Power Cable Comp. 220/60 UL for 47288	74	AH013	Flathead CSK Screw DIN 7991 M5x14 for 47288	156
AH025	Screw TE DIN 933 M10x35 T.F. for 47288	18, 362	AG991	Supp. Plate Prot. Term. MN for 47288	77B	AH055	Lid Shaft for 47288	160
AH040	Pinion Z17 1/2x5/16" D20 for 47288	20	AH060	Plate. Controls Panel for 47288	78	AG996	Plastic Washer 16x25x1 for 47288	161
AH004	Grower Washer UNI 1751 D8 for 47288	21, 23, 226, 336	AH011	Screw TC+ DIN 7985 M4x8 for 47288	79	AH006	Stop Rings DIN 471 D 15E for 47288	162
62663	X.Screw DIN 933 M8x20 for 47288	22	AG971	Face Plate. Controls Panel for 47288	80A	18960	Magnet for SO Anodized/GF/FR for 47288	166
AH070	Washer F Wide DIN 9021 D8x32 ZN for 47288	24	AH012	Screw TSPEI Din 7991 M5x8 for 47288	82, 292	AG997	Cam TA for 47288	168
AH069	Screw without Head DIN 916 M5x16 NE for 47288	26	AH014	Washer F.Larga Din 9021 D4x12 for 47288	84, 273	AG977	Washer for 47288	172
AH050	Spacer for 47288	28	AG949	Black Push Button N.O. for 47288	86	AH026	Hex.Nut DIN 934 M4 for 47288	177, 302
AH034	Ball Bearing 6204 2RS NTN for 47288	30, 34	AG947	Stainless Steel Off Button Resin-Coated Y12 UL for 47288	86B	AH000	Washer Flat DIN 125 D.4 for 47288	179, 194
AH037	Spiral Cast Iron Supp Y12 LAV. for 47288	32B	AG951	Unified Light UL 24 V for 47288	88	69215	Nut DIN 934 M3 for 47288	182
AH052	Dist.Int.Cusc.Supp.Spiral for 47288	33	AG950	White Push Button N.O. for 47288	90	AH017	Screw TCEI DIN 912 M4x12 for 47288	184, 196, 271
AH049	Spiral Support Plate Y12 for 47288	36B	AG948	Stainless Steel On Button with Light Y12 Resin UL for 47288	90B	AG989	Corner Plate for 47288	190
62644	Flat Washer DIN 125 D8 for 47288	37, 334, 356	AH120	Internal Panel ETL 30 TA for 47288	94	AH054	Shaft for 47288	200
AH048	Spiral Y17 for 47288	40	AH113	Internal Wiring 220/60 UL TA for 47288	99	AH005	Grower Washer UNI 1751 D 18 for 47288	201
AH022	Screw TE DIN 933 M8x25 T.F. for 47288	43, 234	AH007	Retaining Rings DIN 471 D 25E for 47288	104, 212, 320	AH033	Flat Washer DIN 125 D 18 Zinc for 47288	202
AH067	Feathers DIN 6885 / A6x6x25 for 47288	46	AH009	Feathers DIN 6885 / A8x7x25 for 47288	106, 322, 355	AH028	Nut ES. DIN 934 M18 for 47288	204
AH059	Tank Protection ETL Vern. for 47288	50	AH114	Transmission Shaft T1 30-40 for 47288	110	AH051	Bowl 400x260 for 47288	210
AH076	Proximity Sensor TA for 47288	53, 51	AH039	Chain 3/8x7/32" for 47288	116	AG955	Bowl Holder for 47288	216
AH096	Proximity Support for 47288	55	AH030	Grub Screw DIN 916 M6x8 NE for 47288	118, 164, 304, 353	AH110	Chain Ring Z85 3/8x7/32" for 47288	220

# Parts Breakdown

## Model MX-IT-0030-RT 47288

Item No.	Description	Position	Item No.	Description	Position	Item No.	Description	Position
AH023	Screw TE DIN 933 M8x35 T.F. for 47288	228	62643	Flat Washer DIN 125 D6 for 47288	275	AH075	Handle TA for 47288	310
AG981	Shaft. Bowl Support for 47288	230	AH106	Hex.Nut DIN 934 M6 for 47288	276	AC008	Screw DIN 916 M8x10 NE for 47288	321, 352
AH032	Screw without Head DIN 916 M8x16 NE for 47288	231	AH093	Hexagonal Screw for 47288	278	AH089	Transmission Shaft for 47288	324
AG945	Bearing 6205 2RS ORS for 47288	232, 328	AH099	Washer DIN 125 D12 for 47288	280	AH103	Pin Inox DIN 7 D10x50 for 47288	326
AG998	Wheel ETL CMT1-3PBB for 47288	250A	AH109	Self-Lock Nut ES DIN982 M12 Low for 47288	282	AH102	C-Clip.Retaining DIN 471 D.20 EXT for 47288	327
AG999	ETL Wheel C / Brake CMT1-3PPB for 47288	250B	AH097	Supp. Cover Sensor M10 TA for 47288	283	AH071	Head Holder for 47288	330
AH087	Bowl Insert. TA for 47288	254	AH094	Pin TA for 47288	284	AH092	Transmission Joint TA for 47288	350
AH085	Fixed Disc TA for 47288	256	AH077	Magnetic Sensor Head UL TA for 47288	288	AH074	Distance Transm. Joint 20-30 TA for 47288	351
AH086	Pin for 47288	258	AH119	Protection Micro ETL TA 30 VRN for 47288	290	AG958	Flange Support for 47288	360
AH124	Rubber Protection for 47288	260	AH095	Release Lever. TA for 47288	294	AG969	3-Pole Connector for 47288	372
AH121	Rotating Disc 30 TA for 47288	262	AH101	Retaining Rings DIN 471 D 16E for 47288	296	AG970	8 Poles Connector for 47288	374
AH118	Welded Head ETL TA 30 VERN. for 47288	270	AH104	Grub Screw DIN 913 M4x35 CE for 47288	298	AH107	Screw without Head DIN 916 M8x12 NE for 47288	380
AH111	Gas Spring 084093 TA for 47288	272	AH122	Release Shaft TA 30 for 47288	300			
AH105	Screw TE DIN 933 M6x30 T.F. for 47288	274	AH123	Hinge Pin 30 TA for 47288	306			